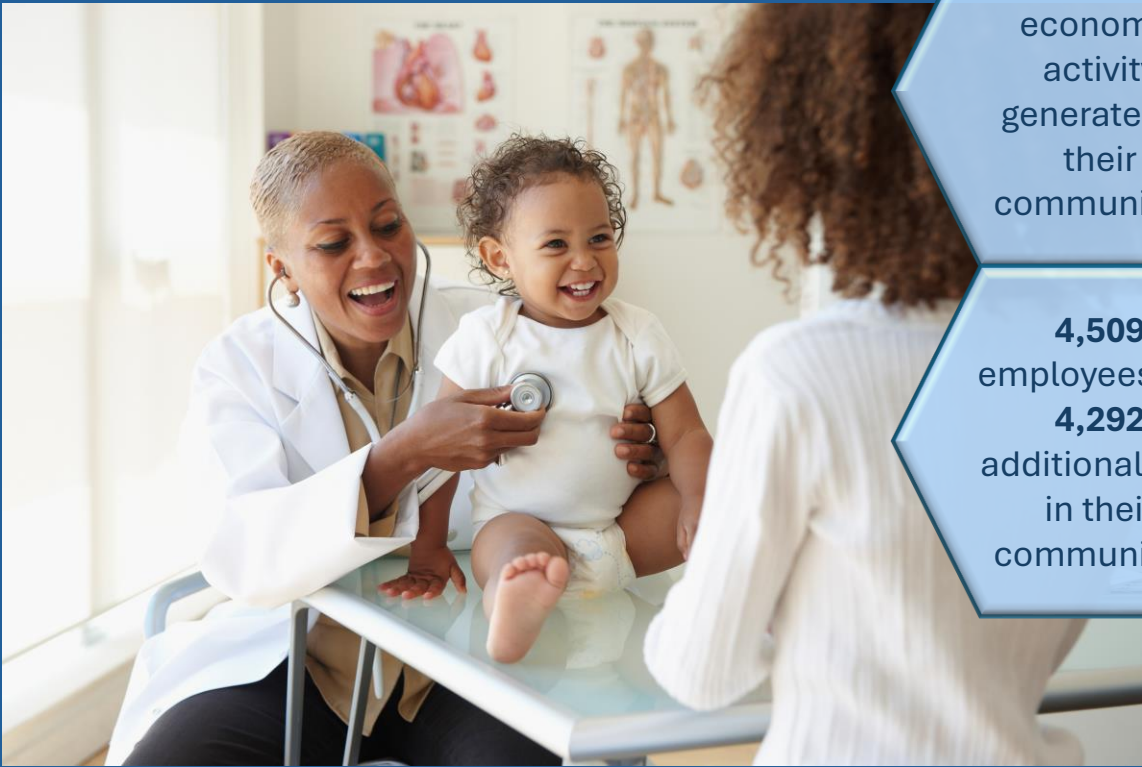


# Community Health Centers in Georgia

## Local Investment, Lasting Impact, Healthier Communities

**Community Health Centers** are nonprofit, **patient-governed** organizations that provide high-quality, comprehensive primary health care to Georgia's **medically underserved communities**, serving **all patients** regardless of income or insurance status. They are economic engines in their communities that purchase local goods and services, create jobs and increase incomes, and contribute to state and local treasuries.

### In 2024, Georgia's Health Centers:



“Regular” health center patients save the health care system millions of dollars per year.

Georgia's health centers were medical homes to almost 710,000 people at over 36 health centers grantees and look-alikes at more than 330 sites in 140 counties across Georgia

- ✓ Saved Medicaid more than **\$450M**
- ✓ Reduced medical costs for uninsured patients by more than **\$165M**
- ✓ **\$534M** in savings to the health care system from the privately insured individuals and families
- ✓ Saved hospitals more than **\$96M** in avoidable hospitalizations
- ✓ Diabetic patients at health centers saved the health care system more than **\$175M**

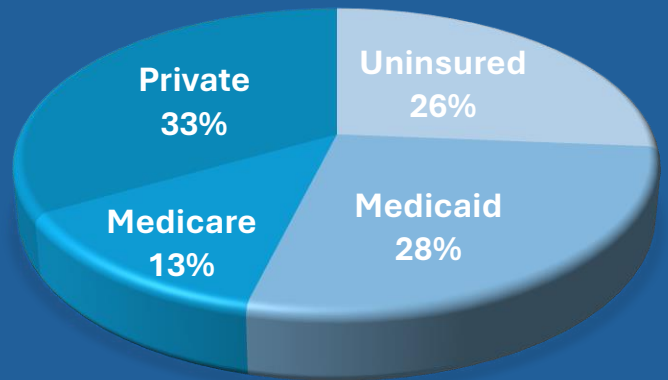


# Georgia's Health Centers

*Health centers serve as medical homes for thousands of residents throughout Georgia*

## In 2024, Georgia's health centers served:

- Almost **710,000** patients, 1 in 15 Georgians
- About **195,600** Medicaid recipients, 1 in 9 Georgia Medicaid recipients
- About **186,000** uninsured patients, 1 in 6 uninsured Georgians



## PAYOR MIX



**186,865**  
Children



**92,480**  
Older Adults



**8,457**  
Veterans



**28,042**  
School-based  
health center  
patients



**21,226**  
People  
experiencing  
homelessness

**1,936**  
Medical professionals



**1,878,209**  
Medical visits

**184.5**  
Dental health professionals



**138,579**  
Dental health visits

**183**  
Behavioral health professionals



**103,478**  
Behavioral health visit

**352.5**  
Enabling services professionals



**111,221**  
Patients accessing enabling services

**4,509**  
Total employees



**2,182,644**  
Total patient visits

Multipliers are derived by dividing the total output by the direct impact, for example a \$100 investment yields \$190 in economic activity, or \$1.90 for every dollar spent.

Estimates of indirect and induced economic impacts were generated using IMPLAN ONLINE with Georgia-specific state multipliers.

Indirect impact is a measure of money spent on other state industries because of an investment.

Induced impact is a measure of household income from other state industries because of an investment.

2023 US Census American Community Survey population estimate for Georgia, 2023 Uniform Data Set (UDS) report for Georgia's health centers.

Regular users are estimated at 84% of total users, [www.nachc.com](http://www.nachc.com)

Data resources available at [www.georgiapca.org](http://www.georgiapca.org)

Kaiser Family Foundation [www.kff.org](http://www.kff.org)